



# NEWSLETTER #26

MAY 2023

## IN THIS ISSUE:

1. COMMUNITY HOSPITAL SIG DISCUSSION GROUPS
2. COMMUNITY HOSPITALS ASSOCIATION AGM
3. INNOVATION AND BEST PRACTICE AWARDS – A NATIONAL AWARD FROM THE CHA
4. Q COMMUNITY
5. COMMUNITY HOSPITAL RESOURCE PACKS
6. COMMUNITY HOSPITALS IN THE NEWS
7. WHEELCHAIR SKILLS
8. CHA AT INTERNATIONAL CONFERENCE ON INTEGRATED CARE 2023
9. BLOG—BOLD LEADERSHIP BY EVELYN PRODGER CHAIR OF THE CHA
10. COMMUNITY HOSPITAL NETWORKS

## Community Hospital SIG Discussion Groups



The Community Hospitals Special Interest Group Discussion Evenings are organised by the Community Hospitals Association and our Community Hospitals Special Interest Group - part of the Q Community.

All are very welcome and all sessions are free.



WEDNESDAY 7<sup>TH</sup> JUNE AT 7PM.

### GLOUCESTERSHIRE:

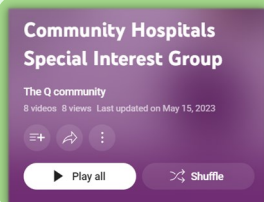
#### A VIBRANT AND THRIVING COMMUNITY HOSPITAL COMMUNITY

Join our next online Discussion Group to hear Dawn Allen speaking about the 7 Community Hospitals in Gloucestershire. It should be a lively discussion.

[REGISTER HERE](#)



**DAWN ALLEN**  
SERVICE DIRECTOR FOR  
COMMUNITY HOSPITALS



If you have missed our previous Discussion groups, including topics such as Safer Staffing, Meaningful Activities Coordinator and Joy in Work they can all be watched on our playlist [here](#).

### Join our Special Interest Group for Community Hospitals in the Q Community

Be part of our growing network in the Q Community.

Details on our website—[Join the Community Hospitals Special Interest Group on Q here](#)

If you would like more detailed instructions on HOW to join please follow [this link](#) to a step by step guide.



## Community Hospitals Association AGM

The AGM of the CHA will be held on **14TH JUNE 7PM-7.30PM**— if you are a member and want to attend please email us at [infocommunityhospitals@gmail.com](mailto:infocommunityhospitals@gmail.com)



## Innovation and Best Practice Awards – A National Award from the CHA

We are delighted to have received submissions for the 2023 awards, and our panel will be carefully considering these.

We were very pleased to give awards last year to staff in Trusts including Oxfordshire, Cornwall, Northern Ireland and Northumbria. Details of past award winners [here](#).



MATRONS IN OXFORDSHIRE,  
JULIE BEARDMORE, MIREIA  
RUIZSOLEY AND DAWN ROBERTS



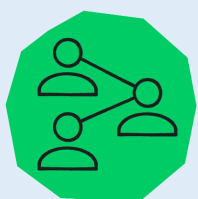
ANNA MITCHELL AND THE CORNWALL  
PARTNERSHIP NHSFT  
MEANINGFUL ACTIVITIES TEAM



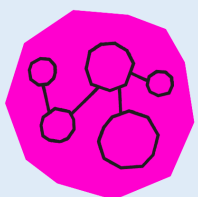
ANNALOUISA WOOD, MATRON OF ALNWICK  
AND BERWICK COMMUNITY WITH HER TEAM

## Q Community

We appreciate the continued support that we have from the Q Community, not only financially but also in practical support, resources, connections and advice.



**Q Exchange** funds in 2021-2022 enabled us to carry out the study into the contribution of community hospitals during COVID-19.



**Q Connections** funds in 2022-2023 have supported in growing a network of people who have joined our Special Interest Group for those interested in Community Hospitals and Quality Improvement.

We hope to continue our work within Q, and are aiming to organise a national event to continue our sharing and learning of innovation and good practice in community hospitals.

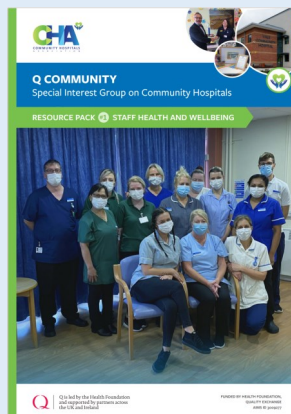
We thank the team at Q who have been supportive and encouraging.



## Community Hospital Resource Packs

We have developed [Resource Packs](#), building on the topics and discussions in our online discussion groups.

They are now available to download and we hope that they are useful. Please let us know.



**RESOURCE PACK #1**  
**STAFF HEALTH AND WELLBEING**



**RESOURCE PACK #2**  
**INTEGRATED CARE**

## Community Hospitals in the News

Our website continues to provide updates on community hospitals across the UK. Do follow [this link](#) for the latest news.

Recent news articles include the achievement of a Trust in Cumbria in staffing levels.



ILKESTON COMMUNITY HOSPITAL

We give the news of developments in community hospitals such as Livingstone Community Hospital and Withington Community Hospital to have diagnostic centres and Ilkeston to have an MRI and new outpatient department.



LIVINGSTONE COMMUNITY HOSPITAL

The Eye Centre has been opened at South Molton Community Hospital. The rebuilding of Machynlleth Hospital is now complete and the hospital is open. Plans for the redevelopment of Shotley Bridge Hospital have been approved.

In the news is also the inquiry into Gosport Hospital which is ongoing. The site of Dartmoor and Kingswear Community Hospital is up for sale, and although there was community interest in purchasing the site for continued local use, financial targets were not met so it is on the open market.

Do send us your news stories and anything you would like us to feature in our newsletter.

## Wheelchair Skills



#QCommunity member, Pete Donnelly (@wheelchairskill) describes how, drawing on his own lived experience, he is making wheelchair skills available to wheelchair users across the UK, building confidence and independence through social media.

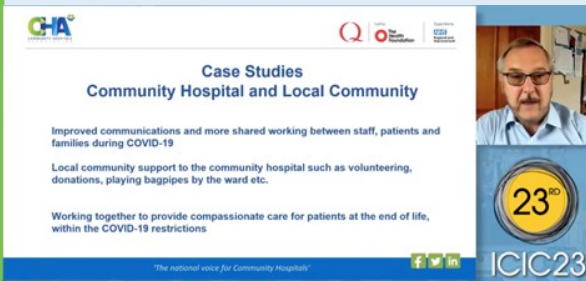
Read now [fal.cn/3yui0](https://fal.cn/3yui0) [pic.twitter.com/R9O1tas1d3](https://pic.twitter.com/R9O1tas1d3)  
24/05/2023, 09:00

Pete Donnelly is keen to talk about the application of his [wheelchair skills college](#) to community hospitals and rehabilitation programmes. His account is available [here](#).



## CHA at International Conference on Integrated Care 2023

Dr David Seamark has presented his paper on community hospitals and integrated care at ICIC23. The conference typically attracts over 1000 delegates and was held in Antwerp. Dr Seamark delivered his paper remotely, and is doing so on behalf of the CHA and the project team. Questions afterwards focused on sustainability of quality improvement and integrated care post COVID-19.



The presentation will be available on the CHA website after the conference. It is great to have an international audience for our study on community hospitals.

Thank you to David for doing this for the CHA.



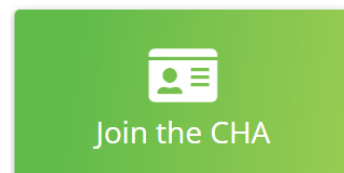
### Bold Leadership by Evelyn Prodger Chair of the CHA

*“2023 is going to be a year where Nurses and Nursing are challenged to deliver the art and science of what they do in difficult circumstances but the difference will be continued bold leadership that “roars” to support patient safety, professional development and innovation.”*



## Community Hospital Networks

The CHA is the national voice of community hospitals. We are a membership organisation, and we offer individual personal membership at no charge. All are welcome to join our growing network of connected individuals concerned with community hospitals.



We also offer [membership to organisations](#) such as NHS Trusts and Leagues of Community Hospital Friends. There is a small fee for this.



You are welcome to join our Community Hospital Special Interest Group within the Q Community with a focus on Quality Improvement and sharing good practice.

If you are already a Q member, you can visit our page and join. If you have yet to join Q, or are not a member, you are invited to [create a guest account](#) so that you can join our SIG.

### CONTACT & SOCIAL MEDIA



[www.communityhospitals.org.uk](http://www.communityhospitals.org.uk)



[@CommHospUK](https://twitter.com/CommHospUK)



[COMMUNITY HOSPITALS ASSOCIATION](https://www.linkedin.com/company/community-hospitals-association)



[Community Hospitals Association | Facebook](https://www.facebook.com/CommunityHospitalsAssociation)



[infocommunityhospitals@gmail.com](mailto:infocommunityhospitals@gmail.com)